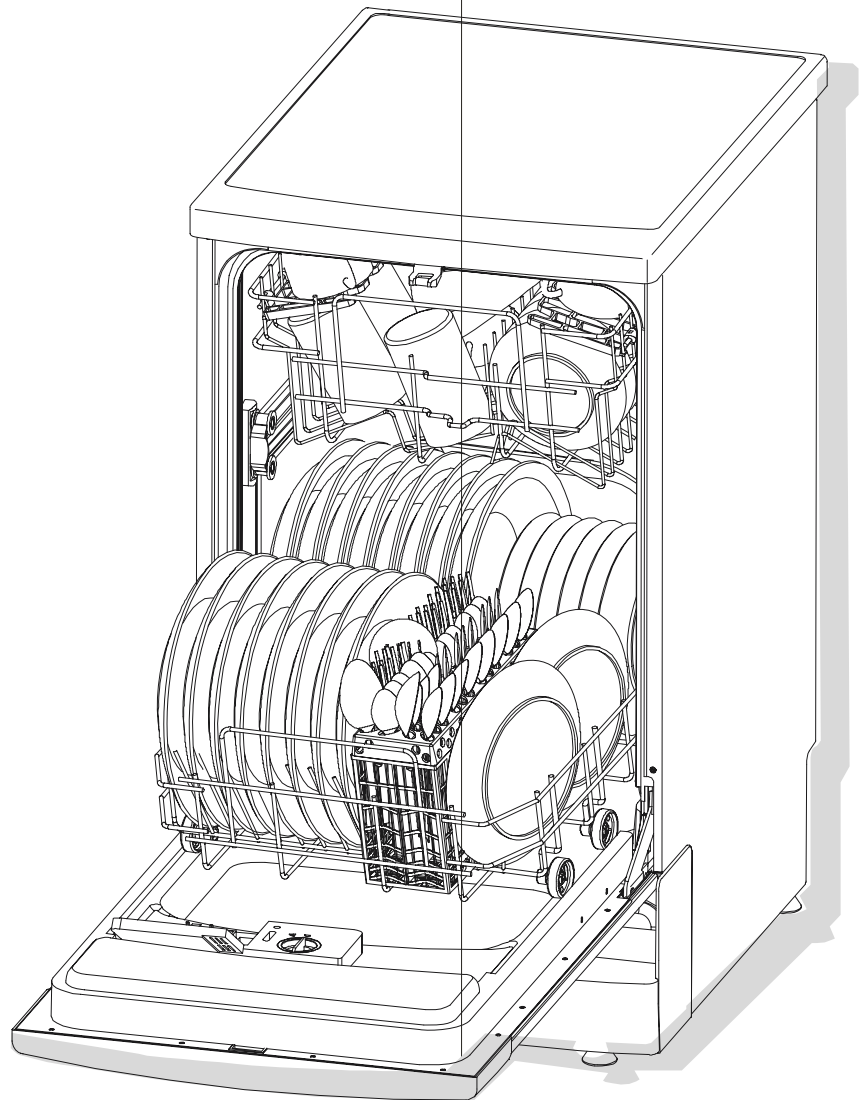


# Dishwasher Installation and Maintenance Instructions



# Content List

Chapter I	Installation-----	1
1.1	Safety Instruction-----	1
1.2	Installation Instruction-----	2
1.3	Trial running-----	4
Chapter II	Maintenance-----	5
2.1	Foreword-----	5
2.2	Troubleshooting-----	5
2.3	Note-----	8
2.4	Attached drawings-----	8
	Electric diagram-----	9
	Connection diagram-----	10

## Chapter I Installation

### 1.1 Safety Instruction

After unpacking, the appliance should be checked to see if there is any damage to it.

The dishwasher is intended to wash dishes and plates by adults.

When using the dishwasher , some basic principals should be followed:

- 1) Extended power cord and adaptor should not be used.
- 2) The power cord should not be too long or knotted.
- 3) Switch off the power before making any repair of the dishwasher.

Children should be kept away from the detergent and the opened dishwasher.

Then dishwasher should not be installed in an unsheltered place or exposed to the rain or other natural environment.

Never touch the heating element during or immediately after use.

The dishwasher should not be lean on or sit on when it is open, otherwise it will be overturned.

If the dishwasher malfunctions, turn off the water inlet and cut off the power before you read the instruction of Chapter II . If the problems cannot be solved by yourself, please contact the professional technicians.

The dishwasher could not be repaired by unprofessional personnel with non-original spare parts. It is recommended that if the dishwasher will not be used for a long time, it should be cut off the water inlet, remove the plug and keep the door of dishwasher ajar.

## 1.2 Installation Instruction

---

### Unpacking

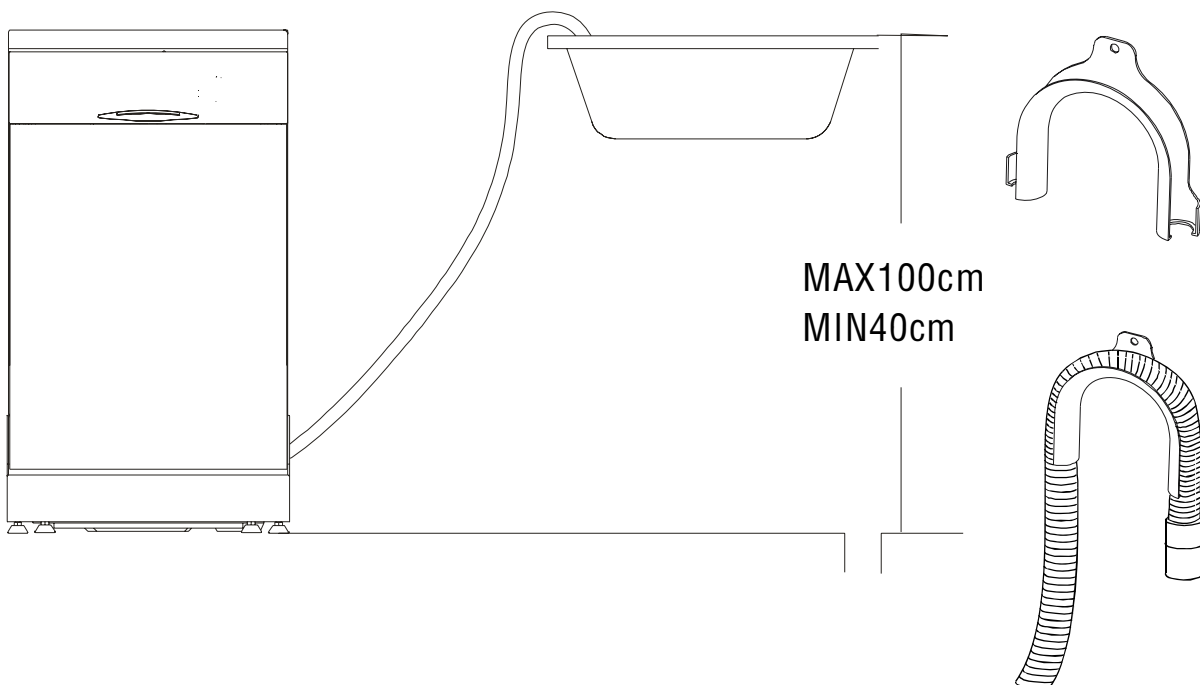
- 1) Removing the packing accessories, please pay attention that the plastic bag should be out of the reach of children.
- 2) Open the door of the dishwasher to check the baskets are placed in the proper place (manufactures may fix the baskets by some simple ways for the sake of safety).

### Locate the dishwasher

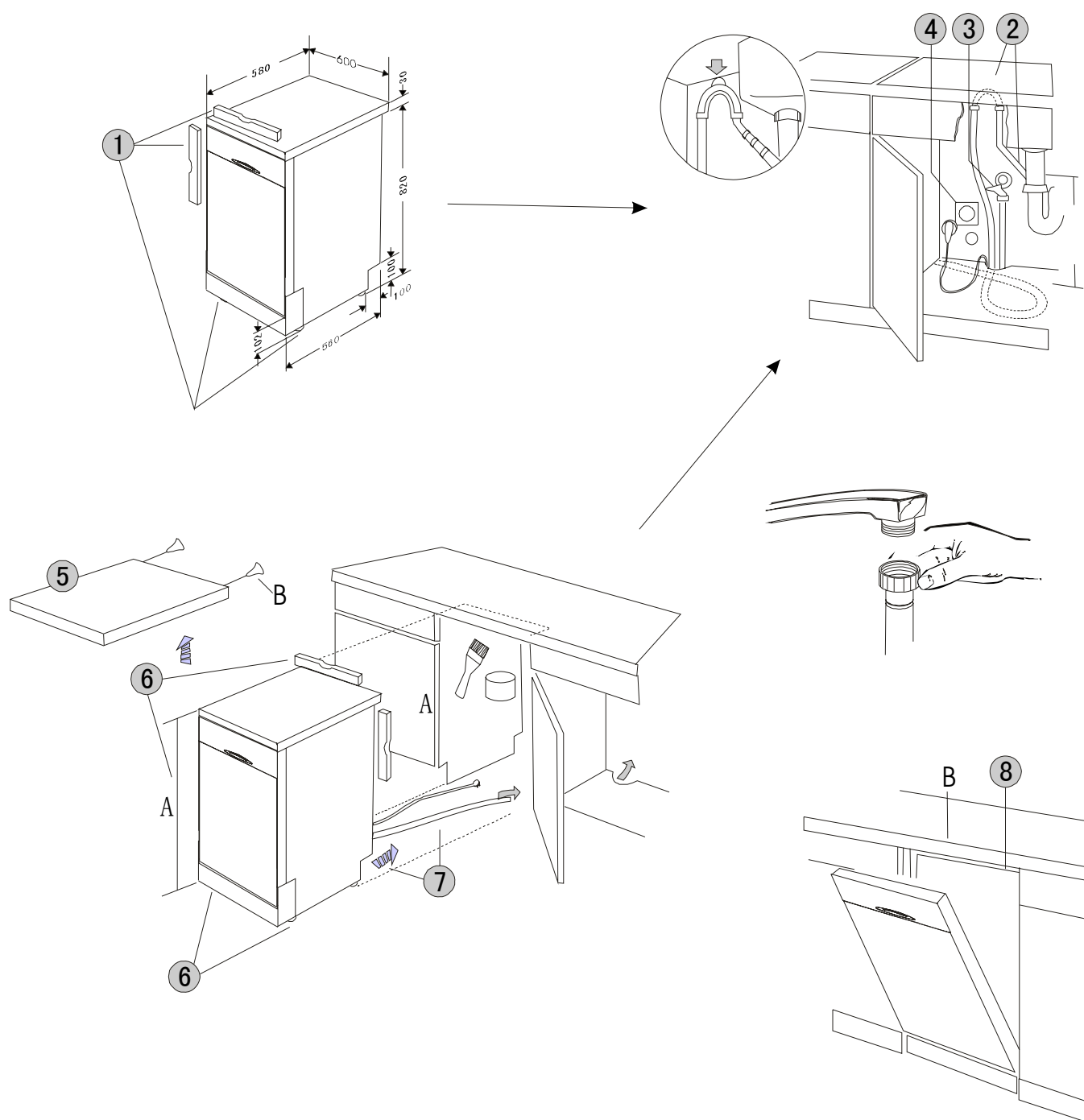
- 1) The dishwasher should be kept away from heating resources and not be exposed to the sun to prevent its coating from fading or falling off.
- 2) The back of the dishwasher should rest against the wall behind it and the sides, along the adjacent cabinets or wall. The water supply and drain hose of the dishwasher could be positioned to the right of the left to facilitate proper installation.
- 3) The dishwasher could not only be built in the cabinet and also be placed freely.

## Installation sketch map of free-stand type

---



## Installation sketch map of Built-in type



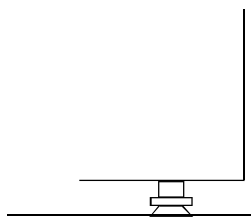
### Installation steps:

- |                               |  |
|-------------------------------|--|
| 1. leveling the appliance     | 2. connecting drain hose                 |
| 3. connecting charging hose   | 4. electrical connection                 |
| 5. disassemble the top board  | 6. Leveling the appliance                |
| 7. positioning in the cabinet | 8. Fix the top with the board of cabinet |

**Note:** When making built-in installation of free-stand dishwasher, after disassemble the top board, the hook of it situated on the upper front corsspiece willbe extruded and needs to be disposed

## Leveling the appliance

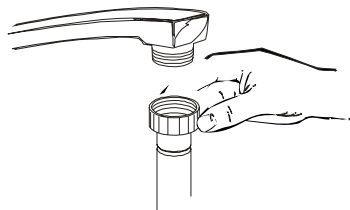
---



Once the appliance is positioned, adjust the feet(screw them in or out) to adjust the height of the dishwasher, making it level to ensure the proper performance.

## Charging hose connection

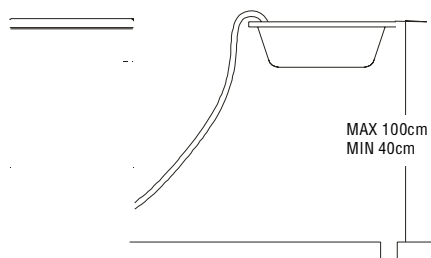
---



1. Connect the charging hose to a water faucet(with a unicouple). See figure 4.
2. If the water pipe is new or has not been used for an extended period of time, let the water run to make sure that the water is clear and free of impurities, then connect it with the charging hose of the dishwasher.
3. The water pressure is 0.04–1.00Mpa.

## Drain hose connection

---



Insert the drain hose into a drain pipe, or let it run into a sink, but the free end of the hose must be at a height of less than or equal to 80cm and must not be immersed in water.

## Electrical connection

---

1. After making sure that the voltage and the frequency values for the current in the home correspond to those on the rating plate, insert the plug into an electrical socket which is earthed properly. See figure 6.
2. If the electrical socket to which the appliance must be connected is not appropriate for the plug, replace the socket rather than using a adaptor or the like as they could cause overheating and burns.

### 1.3 Trial Running

After installation, choose any one of the programs to run to check the dishwasher functions well.

## Chapter II Maintenance

### 2.1 Foreword

Before any repair service, you should check:

- Whether the dishwasher is properly installed according to the installation manual.
- Whether the damaged components have been repaired or not.
- Whether the charging hose and the drain hose are properly installed.
- Whether the dishwasher is level or not.
- Whether there is salt in the water softener.
- Whether there is rinse agent in the dispenser.

The circuit board is the centrum of the whole control system of the dishwasher. When dishwasher is washing bowels, All information come to the circuit, then the circuit delivery various dictate to every department of dishwasher to keep the dishwasher moving. the dishwasher move with a arranged program. If you know the program and structure of the dishwasher, you will easy find out all kind of trouble of dishwasher.

### 2.2 Troubleshooting

Questions put forward by users	By misusage of users	The problems of the dishwasher itself
The dishwasher does not start	<ul style="list-style-type: none"><li>* Something wrong with the socket</li><li>* No water (the water valve is closed)</li><li>* Improper electrical connection</li><li>* The door is not properly closed</li><li>* Incorrect position of charging hose</li></ul>	<ul style="list-style-type: none"><li>* Power cord</li><li>* "ON/OFF" switch</li><li>* Door switch</li><li>* Water inlet valve</li><li>* Pressure switch</li><li>* Aqua-stop switch</li></ul>
Water floods in the dishwasher		<ul style="list-style-type: none"><li>* Air leakage of the chamber</li><li>* The hose of pressure switch</li><li>* Pressure switch</li><li>* Water inlet valve</li></ul>
The dishwasher does not heat		<ul style="list-style-type: none"><li>* Malfunction of heating element</li><li>* The circuit is not properly contacted</li><li>* Malfunction of the thermocouple</li></ul>
No water comes into the dishwasher	<ul style="list-style-type: none"><li>* Water supply is cut off</li><li>* The filter of the water inlet valve is clogged.</li></ul>	<ul style="list-style-type: none"><li>* Connection to the inlet valve is broken or damaged.</li><li>* Electrical connection is cut off.</li><li>* Pressure switch</li><li>* Aqua-stop switch</li><li>* The softener is blocked.</li></ul>
Lower power pump <sub>(just for some model)</sub> : Water leak from the axes Washing pump is out of work	<ul style="list-style-type: none"><li>* Seal is infirm</li><li>* The terminal of the capacitance is infirm.</li><li>* The circuitry is open.</li></ul>	<ul style="list-style-type: none"><li>* Replace the washing pump</li><li>* Make sure the connection is firm</li></ul>
Protecting device with double Pressure switch <sub>(just for some model)</sub> : The pressure switch is out of work The work of the washing pump is un-normally The washing pump does not work after switch on the appliance	<ul style="list-style-type: none"><li>* The hose connected the pressure switch is bended.</li><li>* There are something wrong with the parameter of the pressure switch.</li><li>* Terminal break off the pressure switch power cord is infirm.</li></ul>	<ul style="list-style-type: none"><li>* Refix the PVC hose</li><li>* Replace the pressure switch</li><li>* Check the wire, make sure the Connection is firm.</li><li>* Replace the pressure switch</li></ul>

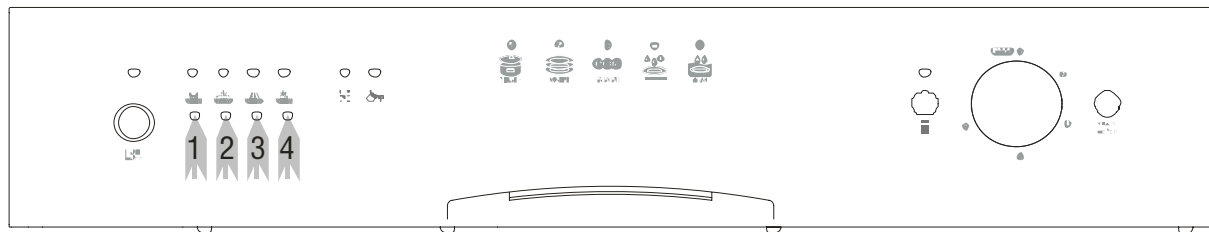
The dishes are not clean enough after washing	<ul style="list-style-type: none"> <li>* The filter is clogged.</li> <li>* Unqualified detergent or the dosage in the container is not correct.</li> <li>* No salt in the softener</li> <li>* No rinse agent</li> <li>* Incorrect loading of dishes *</li> <li>Something wrong with the drain pipe in the home</li> </ul>	<ul style="list-style-type: none"> <li>* Flow and pressure of washing pump</li> <li>* Detergent is not released from dispenser</li> <li>* Heating element is not working</li> <li>* The nozzle is blocked by food particles</li> <li>* No water coming into the dishwasher</li> <li>* The dispenser malfunctions</li> <li>* Sth wrong with the pressure switch and the charging water is not enough</li> </ul>
The dishwasher couldn't wash properly	* Wrong loading position of the dishes.	<ul style="list-style-type: none"> <li>* Short circuit of startup capacitance</li> <li>* Washing motor is blocked or burnt</li> <li>* Pressure switch</li> <li>* Malfunction of the circuit board</li> </ul>
The dishes are wet	* The customer chose the program without drying performance	<ul style="list-style-type: none"> <li>* Thermocouple doesn't work properly</li> <li>* Heating element is malfunctions</li> <li>* Something is wrong with the circuit board</li> </ul>
The dishes are not completely dried	<ul style="list-style-type: none"> <li>* Incorrect loading of the dishes</li> <li>* Earlier opening of the door</li> <li>* No rinse agent or the dosage is not enough</li> <li>* Incorrect selecting the program</li> </ul>	<ul style="list-style-type: none"> <li>* The passage of the breather is blocked</li> <li>* The drain pump does not drain out water</li> <li>* Detergent is not released from the dispenser</li> </ul>
Too much noise	* Incorrect loading of dishes	<ul style="list-style-type: none"> <li>* Noise from washing pump</li> <li>* Noise from drain pump</li> <li>* Noise from water inlet valve</li> <li>* Noise from breather</li> </ul>
Feeling like to be electrically shocked by the dishwasher	* The electrical wire in the house is not earthed.	<ul style="list-style-type: none"> <li>* Connection of the terminal box</li> <li>* Grounding of the heating element</li> <li>* Circuit and its components</li> </ul>
Water leakage and flood of the dishwasher	<ul style="list-style-type: none"> <li>* Too much detergent</li> <li>* Using the detergent with foam, which is not the one intended for using with dishwasher</li> </ul>	<ul style="list-style-type: none"> <li>* Pressure switch</li> <li>* Door gasket</li> <li>* Water leakage of pipes, gaskets and bolts</li> <li>* Drain hose</li> <li>* Washing pump</li> <li>* Softener valve</li> <li>* Softener</li> <li>* Breather</li> </ul>
Dry-protection proof switch, just for hide heating element: * E3:heating error * E4:flooding error * Dry-protection proof switch is out of work	<ul style="list-style-type: none"> <li>* The work of the washing pump is un-normal</li> <li>* The filter is blocked</li> <li>* Filling is not enough</li> <li>* The micro switch connected with the heating element is damaged.</li> <li>* The pressure switch does not act</li> <li>* Heating element or thermostat is damaged or the wire is infirm.</li> <li>* Press switch is damage or the hose connected pressure switch is break</li> <li>* The switch doesn't work</li> <li>* The pressure switch is locked</li> </ul>	<ul style="list-style-type: none"> <li>* Please check the washing pump, make sure it is ok.</li> <li>* Clean the filter</li> <li>* Replace the pressure switch assembly</li> <li>* Please check the wire, make sure all connection is firm</li> <li>* Replace the thermostat</li> <li>* Replace the hose and pressure switch</li> <li>* Please replace the Dry protection switch</li> </ul>

Take-down filter assembly (just for some model): E4:flooding error The micro-filter is locked	<ul style="list-style-type: none"> <li>* The filter system is jammed by scran</li> <li>* Installation is infirm</li> <li>* The Scran collection is damaged</li> </ul>	<ul style="list-style-type: none"> <li>* You should clean the filter system ever week</li> <li>* Please install the filter system again</li> <li>* Please replace the Scran collection</li> </ul>
Odd smell in the dishwasher	<ul style="list-style-type: none"> <li>* Food particles on the tub bottom</li> <li>* Food particles on the heating element</li> <li>* Plastic dishes used in the dishwasher</li> </ul>	<ul style="list-style-type: none"> <li>* The water temperature is too high when drying (overheating)</li> <li>* Thermocouple doesn't work properly</li> </ul>
Long time for a washing cycle	<ul style="list-style-type: none"> <li>* Inlet pressure is too low</li> <li>* Incorrect location of charging and drain hoses or they are bent</li> <li>* The filter of inlet valve is blocked</li> </ul>	<ul style="list-style-type: none"> <li>* The drain hose is crimped or bent</li> <li>* Malfunction of the drain pump</li> <li>* Infill of the inlet valve is blocked</li> <li>* Clog of the softener</li> <li>* Malfunction of the thermocouple</li> </ul>
The detergent could not be released from the dispenser	<ul style="list-style-type: none"> <li>* Bad quality of the detergent</li> <li>* The detergent is damped into blocks</li> <li>* Wrong location of the dishes</li> </ul>	<ul style="list-style-type: none"> <li>* The plug of detergent container could not be opened.</li> <li>* No action of the solenoid valve of electric feeding dispenser.</li> <li>* Malfunction of the electric circuit</li> <li>* Malfunction of the thermocouple</li> </ul>
Dishwasher stops when cycling	<ul style="list-style-type: none"> <li>* The door is not completely shut</li> <li>* The filter is blocked</li> <li>* Too much detergent</li> </ul>	<ul style="list-style-type: none"> <li>* Electric circuit</li> <li>* Door switch</li> <li>* Pressure switch</li> <li>* The circuit board</li> <li>* Power switch</li> </ul>
Dishes are damaged or glassware is broken	<ul style="list-style-type: none"> <li>* The dishes are not suitable for washing in the dishwasher</li> <li>* The dishes are overturned</li> <li>* The washing temperature is not suitable for glassware</li> </ul>	<ul style="list-style-type: none"> <li>* Basket is damaged</li> <li>* Malfunction of the thermocouple</li> </ul>
The dishwasher does not drain	<ul style="list-style-type: none"> <li>* Block of drain hose</li> </ul>	<ul style="list-style-type: none"> <li>* Malfunction of drain pump</li> <li>* Improper connection of electric circuit</li> <li>* Malfunction of the thermocouple</li> </ul>
Lime deposits form on the dishes	<ul style="list-style-type: none"> <li>* Too much detergent</li> </ul>	<ul style="list-style-type: none"> <li>* Reduce the dosage</li> </ul>
The dishes look greasy and a blue film forms on them sometimes	<ul style="list-style-type: none"> <li>* Too much rinse agent</li> </ul>	<ul style="list-style-type: none"> <li>* Reduce the dosage</li> </ul>
Dirty spots on the surface of the dishwasher	<ul style="list-style-type: none"> <li>* The detergent sticks to the damp surface</li> </ul>	<ul style="list-style-type: none"> <li>* Use the detergent according to the user's manual</li> <li>* The detergent should not be spilled on the surface of the dishwasher</li> </ul>
Strange color of the surface of the washed dishes	<ul style="list-style-type: none"> <li>* The salt is not intended to use in the dishwasher.</li> </ul>	<ul style="list-style-type: none"> <li>* The influence of salt on the resin</li> </ul>
High efficiency draining pump (just for some model): * E4:flooding error * The draining pump can't draining	<ul style="list-style-type: none"> <li>* Connection hose is locked by the scran.</li> <li>* Draining pump is damaged during the transport.</li> </ul>	<ul style="list-style-type: none"> <li>* Please fix the hose with the water inlet. Make sure the end of the hose is upper than the water level in the tank.</li> <li>* Clean or replace all connection hose connected with the draining pump.</li> </ul>



## 2.3 Notes

1. According to the program requiring, when the dishwasher is heated to a certain temperature, the circuit board will shut off the electric supply to the electrothermal element.
2. Aqua-stop device: startup the drain pump and make the dishwasher stop its running.
3. The 90°C thermostat is closed under normal condition. When the dishwasher is heated to a certain temperature, the thermostat will open to shut off the electric supply to the electrothermal elements.



1 Pre-rinse light: To come on when pre-rinse.

2 Wash light: To come on when wash.

3 Rinse light: To come on when rinse.

4 Drying light: To come on when drying.

4. If the inlet valve has worked for 4 minutes, the pressure switch has not acted, the dishwasher will shut off all the loads and drain for 60 seconds, the alarm buzzer will ring for 30 seconds, at the same time, the DRYING LIGHT coruscate then show on after draining.

5. If the drain pump has worked for 4 minutes, the pressure switch has not been reset, the dishwasher will shut off all the loads and drain for another 120 seconds after pressure switch reset, the alarm buzzer will ring for 30 seconds, at the same time, the RINSE LIGHT coruscate then show on after draining.

6. If the heating element have heated for 60 minutes, the thermocouple has not acted, the dishwasher will shut off all the loads and drain for another 60 seconds after pressure switch reset, the alarm buzzer will ring for 30 seconds, at the same time, the RINSE LIGHT and the DRYING LIGHT coruscate together then show on after draining

7. If the micro switch for overflow protection has acted more than 2 seconds, the dishwasher will shut off all the loads and drain for another 60 seconds after pressure switch reset, the alarm buzzer will ring for 30 seconds, at the same time, the WASH LIGHT coruscate then show on after draining.

8. If the thermocouple have been checked for open circuit, the dishwasher will shut off all the loads and drain for another 60 seconds after pressure switch reset, the alarm buzzer will ring for 30 seconds, at the same time, the WASH LIGHT and RINSE LIGHT coruscate together then show on after draining.

9. If the thermocouple have been checked for short circuit, the dishwasher will shut off all the loads and drain for another 60 seconds after pressure switch reset, the alarm buzzer will ring for 30 seconds, at the same time, the WASH LIGHT and DRYING LIGHT coruscate together then show on after draining.

## 2.4 Attached drawings

Electrical Drawing

220-240V/50Hz

