



Performance is everything.™

Vax Ltd., Kingswood Road, Hampton Lovett, Droitwich, Worcestershire, WR9 0QH, UK
email: info@vax.co.uk - website: vax.co.uk

Version 1.0

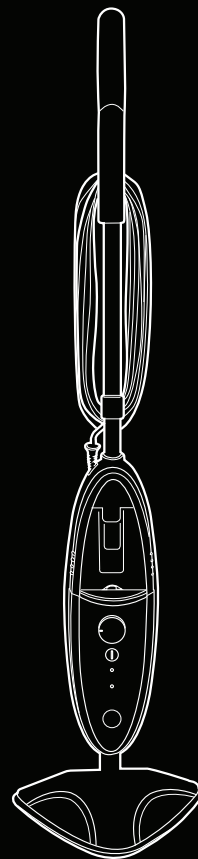


User Guide

Vax Careline: (UK) 0844 412 8455
(ROI) 1-800 928 308

Stick steam cleaner

Bare Floor Pro



Get cleaning...

What's your Vax model number? (Located on the flap of the packaging)

e.g. S2S

What's your serial number? (Located on the base of the machine)

	-							-			-			-			-				
--	---	--	--	--	--	--	--	---	--	--	---	--	--	---	--	--	---	--	--	--	--

Note these down in case you need them in future. Please keep instructions for further use.

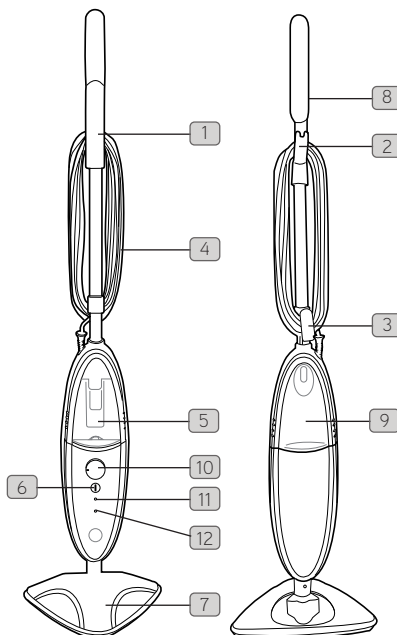
vax.co.uk

S2S series

Machine Overview

- 1 Handle
- 2 Upper cord hook (rotating)
- 3 Lower cord clip (fixed)
- 4 Power cord
- 5 Clean water tank (front)
- 6 Power button
- 7 Floor head
- 8 Steam release trigger (hidden)
- 9 Detergent tank (back)
- 10 Detergent control dial
- 11 Power indicator light
- Blue light = unit on
- 12 Steam ready indicator light
- Green light = steam ready
- No Green light = water heating to max temp
- (NOTE: You can still use your steamer at this time)

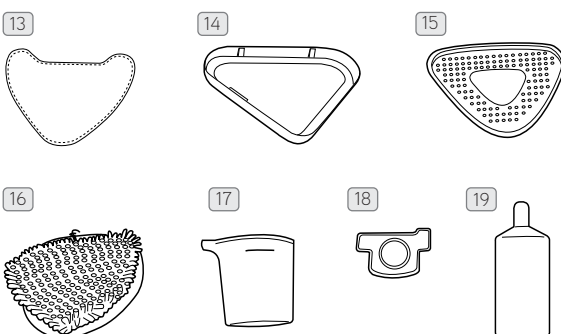
Unit



- 13 Velcro microfibre cleaning pads x 2
(for use on hard floors and refreshing carpets)
- 14 Carpet glider
- 15 Cooling base
- 16 Coral pads x 2 (dependant on model)
(for use on stubborn stains on hard floors including uneven surfaces)
- 17 Measuring jug
- 18 Hard water filter (hidden - remove clean water tank (5) to gain access)
- 19 Vax detergent (qty dependant on model)

PLEASE NOTE: some parts may vary according to model. Please check inside flap of box for more details.

Accessories



General Safety Information

FOR HOUSEHOLD USE ONLY.

When using the stick steam cleaner, basic safety precautions should always be observed, including the following:



WARNING: The stick steam cleaner head gets very hot during operation.

DANGER OF SCALDING: Avoid contact with the steam.

1. Do not leave the appliance unattended while it is switched on. Unplug the appliance from the mains supply socket before carrying out any maintenance or trouble shooting checks and before you fill/empty the water/detergent tanks.
2. The appliance must be kept out of children's reach and should not be used by children.
3. In order to ensure safety, the appliance should only be assembled, connected and operated as set out in the instructions. Only use accessories, which are recommended by manufacturer.
4. This appliance is not intended for use by persons (including children) with reduced physical, sensory or mental capabilities, or lack of experience and knowledge, unless they have been given supervision or instruction concerning the use of the appliance by a person responsible for their safety.
5. Examine the appliance before use in order to detect signs of damage. Do not operate if the appliance, its power cord or plug, show any signs of damage.
6. Do not use the stick steam cleaner if it has been dropped, damaged, left outdoors or dropped into water.
7. Check the appliance and the mains wire before each use.
8. Do not unplug by pulling on the cord.
9. Do not handle the plug or stick steam cleaner with wet hands.
10. After use unplug the appliance from the mains supply socket.
11. When the appliance is in operation, the floor head should not be directed toward humans, animals or plants.
12. Never immerse the appliance in water or other liquid.
13. Do not use any type of chemicals or additives in the clean water tank.
14. Turn off all controls before unplugging.
15. Do not attempt to remove blockages with sharp objects as they may cause damage.
16. Store indoors and put away after use to prevent tripping

accidents.

17. Using improper voltage may result in damage to the motor and possible injury to the user. The correct voltage is listed on the rating label.
18. A hazard may occur if the stick steam cleaner runs over the power supply cord.
19. Do not add descaling, perfumed products, cleaning solutions, oils or any other chemicals to the clean water tank used in this appliance.
20. Do not use the stick steam cleaner on leather, wax, polished furniture or floors, synthetic fabrics, velvet or other delicate, steam sensitive materials.

NOTE: If the supply cord is damaged it must be replaced by the manufacturer or a Vax authorised agent, in order to avoid a hazard or invalidating the guarantee.

NOTE: Before performing cleaning or maintenance tasks and after each use unplug the appliance from the mains supply socket and let it cool down sufficiently.

NOTE: The liquid or steam must not be directed towards equipment containing electrical components.



IMPORTANT: Do not operate stick steam cleaner without water in clean water tank. The clean water tank must not be removed when in use.



WARNING: The appliance heats up during operation, therefore only touch handle or buttons. Always let the appliance cool down before attaching or removing accessories



WARNING: Never try to modify or change the mains plug of the appliance. Make sure that the supply voltage corresponds to the voltage marked on the rating label of the appliance.



IMPORTANT: Only use Vax steam detergent with this model. Product failures caused by using other solutions with this model will invalidate your warranty.

This stick steam cleaner is for household use only and NOT for commercial or industrial use.

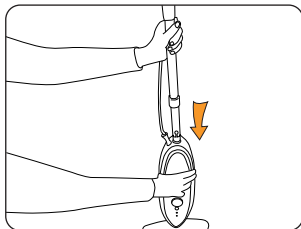
PLEASE KEEP INSTRUCTIONS FOR FURTHER USE.

Operation

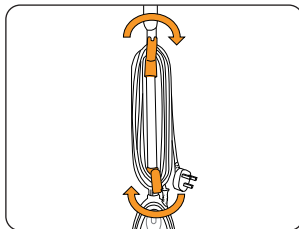
Assembling your stick steam cleaner



WARNING: To reduce the risk of personal injury, unplug the steamer when assembling.



Push handle into main body until you hear a 'click'.



Wrap cord around hooks for easy storage.

Attaching the velcro microfibre or coral cleaning pad (note: for use on hard floors and refreshing carpets)

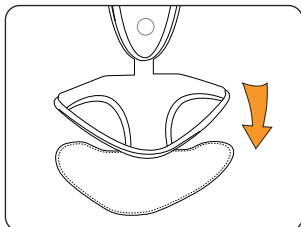


WARNING: To reduce the risk of personal injury, unplug the steamer when fitting the cleaning pads.



IMPORTANT: Never use the stick steam cleaner without a cleaning pad attached to the floor head.

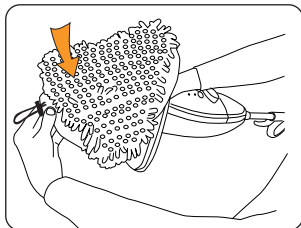
Velcro microfibre pad



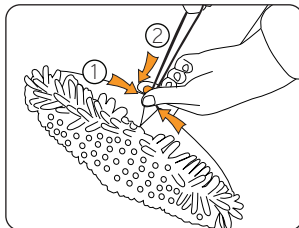
Place the product on top of the velcro microfibre pad making sure the mop head covers the entire pad. The blue face should be in contact with the floor.

Coral cleaning pad (dependant on model)

(note: for use on stubborn stains on hard floors including uneven surfaces e.g tiles with grout)



Place the coral pad over the floor head.



Tighten the draw string so the coral pad is fitted securely.

Operation

Before you begin cleaning

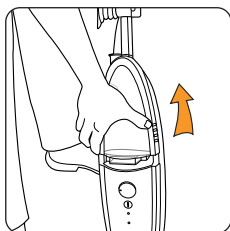
! IMPORTANT: Your detergent control dial will be set to 'tough stains' when you remove your steamer from the box. If you do not want to use detergent on your flooring, this must be rotated to 'steam/refreshes carpets only' position. Always test on an inconspicuous area of flooring first before using detergent.

Filling clean water tank

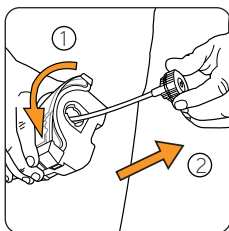
! IMPORTANT: Do not use hot or boiling water to fill clean water tank. Do not overfill the water tank.

! WARNING: To reduce the risk of personal injury, unplug the stick steam cleaner when filling the unit.

! NOTE: Do not operate stick steam cleaner without water in the clean water tank.



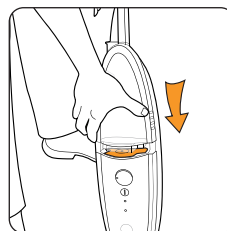
Remove the clean water tank at the front of the unit.



Twist the cap slightly anti-clockwise to remove.



Fill the tank with max 500ml of water and replace the water cap. Tighten by twisting clockwise.

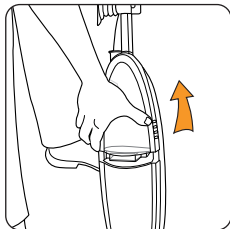


Replace the clean water tank, clicking into place making sure the hard water filter is in place.

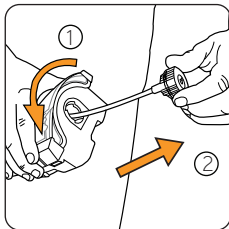
Filling detergent tank

! WARNING: To reduce the risk of personal injury, unplug the stick steam cleaner when filling the unit.

! IMPORTANT: Do not mix Vax detergent with any other cleaning detergent. This product can be used with and without detergent.



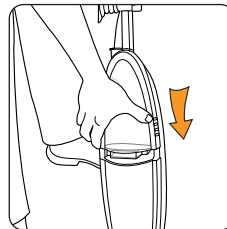
Remove the detergent tank from back of unit.



Twist the cap slightly anti-clockwise to remove.



Pour 50ml of Vax detergent and 250ml of water using the measuring jug into the detergent tank and replace the tank cap. Tighten by twisting clockwise.*



Slide detergent tank down and snap into place.

(*NOTE: 50ml detergent plus 250ml water to 1 clean water tank).

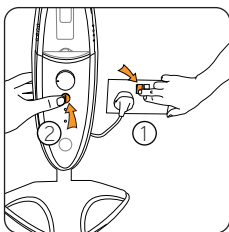
Operation

Steam cleaning hard floors

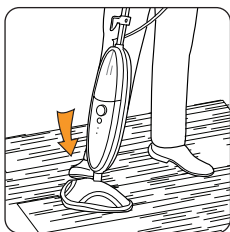
WARNING: Never leave the stick steam cleaner in one spot on any surface for an extended period of time with a damp or wet pad attached as this may damage the floor surface. Your stick steam cleaner should only be used on tiles, lino and sealed wood flooring including sealed laminate.

WARNING: Do not operate/use stick steam cleaner without water in clean water tank.

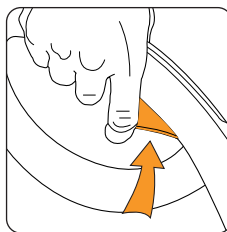
IMPORTANT: To reduce the risk of personal injury, unplug the steamer when assembling the accessories.



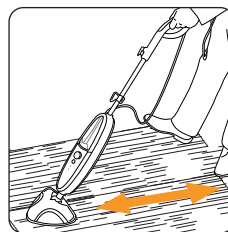
Plug into mains and turn on. Press power button in and the **blue** power indicator light will illuminate. Within approx 1 min of the unit being turned on, the **green steam ready** indicator will illuminate when ready for use.



To recline the unit place foot on floor head and tilt handle backwards.



To produce steam squeeze the trigger in short bursts. To prevent overly wetting floors, do not hold down continuously.



Move the steam stick slowly backwards and forwards across the floor paying particular attention to high traffic areas. Squeeze/release trigger as required.

NOTE: When the green light is off water is heating to max temperature.

NOTE: For 1 x 500ml water tank = 15 minutes steaming time (approx.).
Add detergent if required

Blue light = unit on

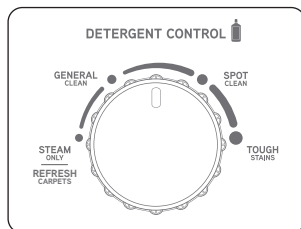
Green light = steamer ready to use

No green light = water heating to max temperature (NOTE: You can still use your steamer at this time)

If during use the green light switches off this means the steamer is heating up to maximum temperature. The green light will re-appear when it has heated back up to maximum temperature.

Operation

To clean with steam detergent



This product can be used with and without detergent. To use with detergent turn the detergent control dial to desired setting for area you want to clean. Squeeze/release trigger to dispense detergent.



WARNING: Only use recommended Vax Steam Detergent.

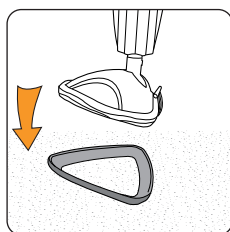


NOTE: The detergent can be used on hard floor surfaces.

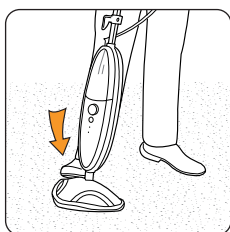
Refreshing carpets



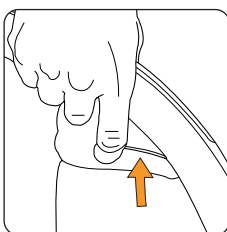
IMPORTANT: When using on carpets, always ensure the velcro microfibre cleaning pad is properly attached to the floor head.



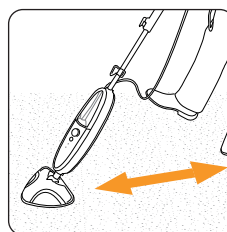
Place unit into carpet glider with pad attached.



To recline the unit place foot on floor head and tilt handle backwards.



To produce steam squeeze the trigger in short bursts to prevent overly wetting carpets. Do not hold down continuously.

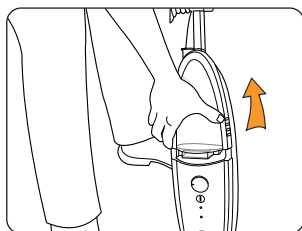


Move the steam stick slowly backwards and forwards across the floor paying particular attention to high traffic areas.

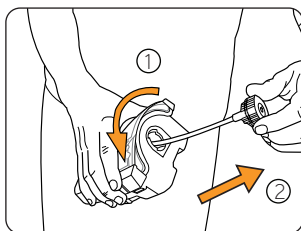
Maintenance (Keep your Vax as good as new)

Emptying the clean water tank

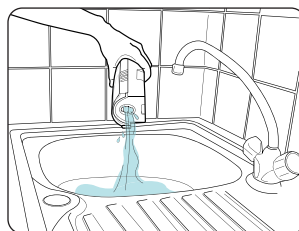
! IMPORTANT: Allow the unit to fully cool down before performing any maintenance or troubleshooting checks.



Remove the clean water tank.



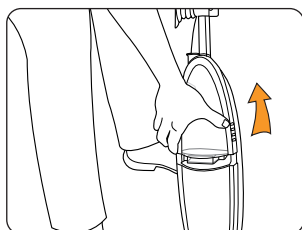
Twist the cap slightly anti-clockwise to remove.



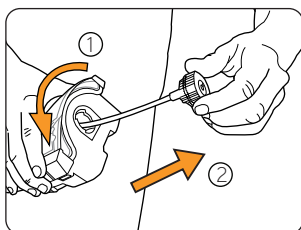
Empty any excess water over the sink, replace water cap and return to the unit.

Emptying the detergent tank

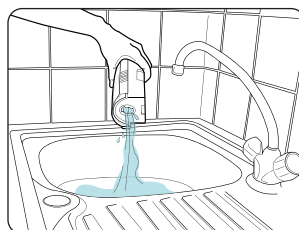
! IMPORTANT: Allow the unit to fully cool down before performing any maintenance or troubleshooting checks.



Remove the detergent tank.



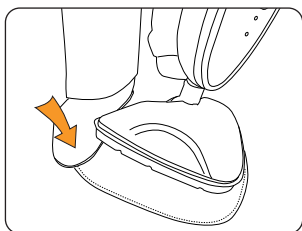
Twist the cap slightly anti-clockwise to remove.



Empty any excess detergent over the sink and return to unit.

Removing the velcro microfibre cleaning pad

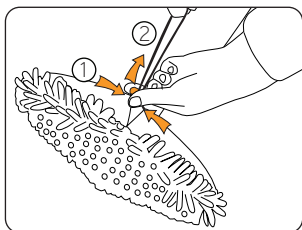
! **IMPORTANT:** Allow the unit to fully cool down before performing any maintenance or troubleshooting checks.



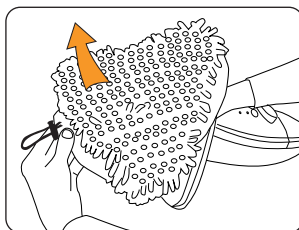
Hold corner of pad down with foot and peel unit away

Removing the coral cleaning pad (dependant on model)

! **IMPORTANT:** Allow the unit to fully cool down before performing any maintenance or troubleshooting checks.



Loosen drawstring.



Remove the coral cleaning pad.

Cleaning the pads

! **IMPORTANT:** Never use bleach or fabric softener when washing the cleaning pad.

- 1** Machine washable at warm temperature (40°C max). Always use a mild detergent.
- 2** Allow to fully dry before use.

Maintenance (Keep your Vax as good as new)

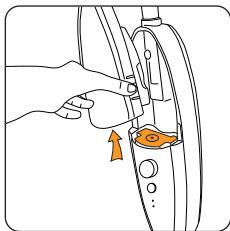
Replacing the hard water filter



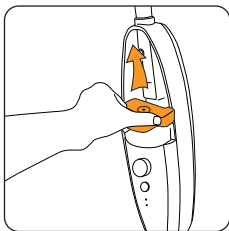
IMPORTANT: The condition of the filter affects the performance of your machine.

Check and change filter (depending on level of use). Do not operate unit without hard water filter in place.

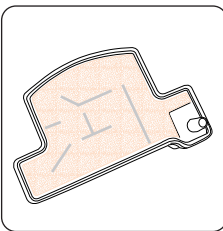
Your machine is fitted with a hard water filter. If you live in an area of hard water the filter will discolour/darken over time (2). Depending on water hardness and/or frequency of use the filter should be changed every 12 months, or once the filter has completely darkened.



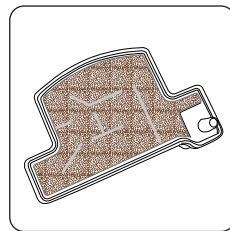
Remove clean water tank to locate the hard water filter.



Remove the hard water filter.



New filter - (beige/cream colour).



Old filter - discoloured and darkened (dark orange).

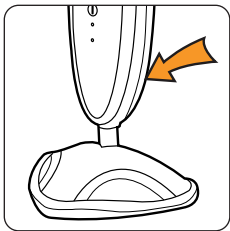
Maintenance (Keep your Vax as good as new)

Clearing blockages

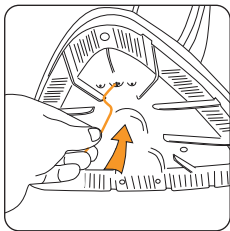


IMPORTANT: Turn unit off. Allow unit to fully cool down before performing maintenance or troubleshooting checks.

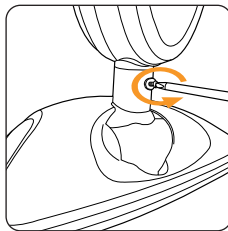
There is a small opening on the back of the unit at the bottom of the grey trim. This opening is a steam exhaust vent should the primary path become blocked. If steam starts to escape from this vent you should:



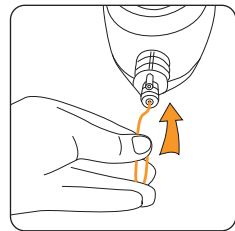
Steam exhaust vent.



Remove cleaning pad and inspect unit base for blockages. If a blockage can be seen use a small thin object such as a paper-clip to try to free blockage.



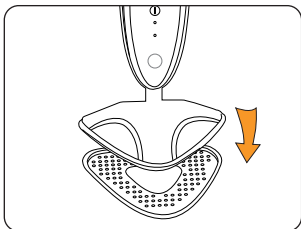
If steam path is still blocked, remove screw on floorhead neck.



After floor head is removed, using a thin object such as a paper-clip (in the area shown), attempt to remove the blockage.

After steamer use/using cooling base/storage

After using the stick steam cleaner and to avoid damage to your floors, unplug the unit and place stick steam cleaner on cooling base until product cools. Once cooled, remove steamer pad and follow 'cleaning the pads' section. Empty out any remaining water in the tank and clean the external surface with a dry cloth.



FAQs



WARNING: To reduce the risk of personal injury, unplug the steam stick before performing maintenance or trouble shooting checks.

Is there an accessory missing?

- Check the Parts Overview page in the guide to make sure the part is definitely included in your unit.
- If the part is missing we're here to help. Simply call us on: **0844 412 8455**

The steam stick cleaner has no power?

- Unit may not be plugged into the electrical outlet correctly, ensure the plug is pushed in securely.
- The electrical outlet may not be working properly, check the fuse or breaker, or consult an electrician.
- The power cord may be damaged, if it is it must be replaced by the manufacturer or Vax authorised agent in order to avoid invalidating the guarantee.
- When in use if the green light goes off the unit may be re-heating. The light should only take 1 minute before this comes on again.

What do I do if an accessory/the unit has become damaged or broken?

- Visit vax.co.uk for parts and spares.
- Please call our **Careline** to purchase new spares or order a replacement.

Why is the steam stick not producing steam?

- There may be no water in the tank; please refer to the operation section.
- Hard water filter may be clogged and may need to be replaced. See maintenance section.
- Steam path may be blocked, refer to cleaning blockages section.

Why won't the cleaning pad pick up dirt?

- The cleaning pad may already be saturated with dirt and needs washing, please refer to the maintenance section.

we're here to help

Instead of taking me back to the shop, simply call:

(UK) 0844 412 8455

(ROI) 1-800 928 308

vax.co.uk
vaxireland.ie

This does not affect your statutory rights

Other Information

UK Service & Help

Vax Careline:

(UK) 0844 412 8455

(ROI) 1-800 928 308

Monday-Friday 8.30am to 6.30pm

Saturday-Sunday 9.00am to 5.00pm

Any queries or concerns about using your Vax, call the Vax Careline. Calls are charged at the UK local rate.

Please make a note of the serial number and model number of the vacuum cleaner before calling. For the nearest Service Agent, please call the Vax Careline or visit vax.co.uk

Consumables

To purchase spares and accessories, please visit vax.co.uk

S2 series hard water filter kit (Type 1):	1-1-130624-00
Microfibre cleaning pads (Type 2):	1-1-130625-00
Velcro microfibre cleaning pads (Type 1):	1-1-131448-00
Coral cleaning pads (Type 1):	1-1-131643-00
Vax Steam Detergent:	1-9-131627-00

Guarantee will only be valid with the use of genuine Vax spares and accessories.

Technical Specification

Voltage:	220 – 240 v ~ 50Hz
Wattage:	1600W
Water tank capacity:	500ml
Detergent tank capacity:	50ml Vax Steam Detergent plus 250ml water
Cord length:	8m
Weight:	3.3kg



Subject to technical change without notice.

EEC Statement of Compliance

Manufacturer/EEC importer: Vax Limited, hereby on our own responsibility, declare that the S2S/S2ST series is manufactured in compliance with the following Directives:



Safety: 2006/95/EC Low Voltage Directive

EMC: 2004/108/EC Electromagnetic Compatibility Directive

Waste electrical products should not be disposed of with household waste. Please recycle where facilities exist. Check with your Local Authority or retailer for recycling advice.

Notes



Notes